

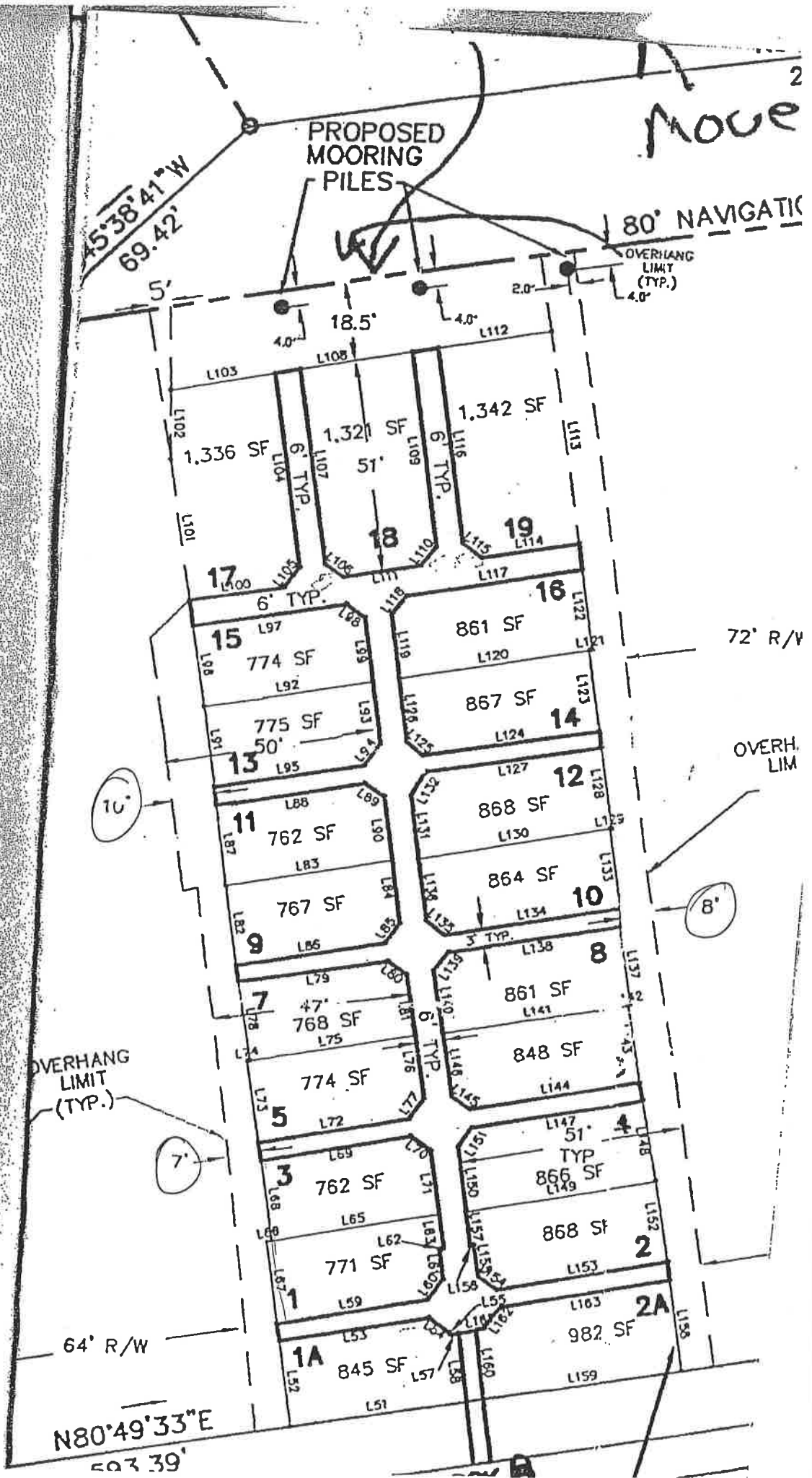
MOVE

S5°38'41"W
69.42'

PROPOSED
MOORING
PILES

80' NAVIGATIO

OVERHANG
LIMIT
(TYP.)
4.0'



72' R/W

OVERH.
LIM

OVERHANG
LIMIT
(TYP.)

64' R/W

N80°49'33"E

69.39'

B

10

8

7

8

1A

2A

15

16

17

19

18

13

14

11

12

9

10

7

8

5

4

3

2

1

2

1A

2A

1336 SF

1321 SF

1342 SF

774 SF

861 SF

775 SF

867 SF

762 SF

868 SF

767 SF

864 SF

768 SF

861 SF

774 SF

848 SF

762 SF

866 SF

771 SF

868 SF

845 SF

982 SF

18.5'

4.0'

2.0'

5'

L103

L108

L112

L102

L109

L116

L113

L101

L107

L115

L114

L100

L106

L117

L97

L98

L122

L92

L93

L120

L91

L94

L124

L95

L96

L127

L88

L89

L128

L87

L83

L130

L82

L84

L134

L85

L86

L138

L79

L80

L141

L78

L75

L144

L74

L76

L148

L73

L77

L145

L69

L70

L147

L68

L71

L149

L66

L62

L153

L67

L63

L152

L59

L58

L158

L53

L57

L163

L52

L51

L159

4.0'

6' TYP.

51'

6' TYP.

6' TYP.

3' TYP.

47'

6' TYP.

51'

5' TYP.

5'

8'

5'

8'

0°49'33"E
270.92'

75' NAVIGATION CHANNEL

NAVIGATION CHANNEL 40' EACH SIDE

40'

L488
1,978 SF
23
L486

18.8'

78.6' R/W

21

21

L213
945 SF
L210

24

L216
51'
930 SF
L219

1'

919 SF
L222
20
L225

19

L207
930 SF

17

L204
58'
TYP
959 SF
L201

18

971 SF
L227

5'

944 SF
L232
16
L235

80.5' R/W

15

L198
956 SF
L198
3' TYP.

14

968 SF
L238

10'

981 SF
L240
12
L243

OVERHANG LIMIT (TYP.)

13

L196
974 SF
L192

10

967 SF
L245

8'

11

L189
981 SF

8

967 SF
L249

12'

9

L187
961 SF
L183

8

966 SF
62'
L254

105.5' R/W

7

L184
968 SF
L180

4

965 SF
L258

5

L177
927 SF
L174

2

1,567 SF
L261

70' R/W

3

L175
956 SF
L171

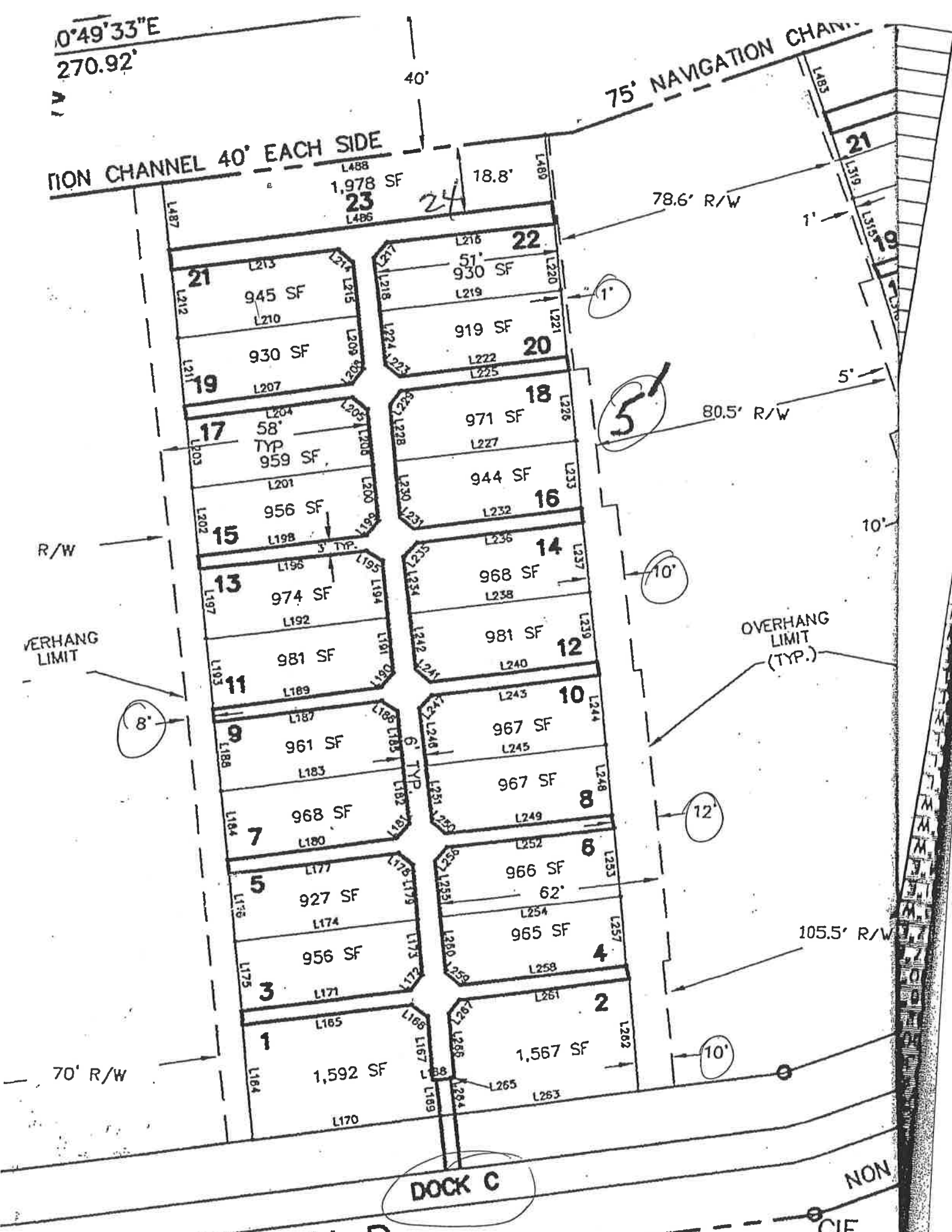
1

L165
1,592 SF
L170

DOCK C

NON

CIF



NAVIGATION CHANNEL 37.5' EACH SIDE

L484
1,829 SF
L482

18.4'
24'

21
L318
51'
965 SF
L314

22
L320
858 SF
L322

20
L325
863 SF
L326

78.6' R/W

1'

61' R/W

6'

19
L319
969 SF
L311
L309

18
L329
870 SF
L331

16
L335
865 SF
L338

6'

17
L308
973 SF
L305

15
L302
980 SF
L300

14
L334
864 SF
L340

80.5' R/W

5'

13
60'
989 SF
L296

12
L344
864 SF
L344

11
L293
980 SF
L291

10
57'
TYP
866 SF
L350

OVERHANG LIMIT (TYP)

-10'

10'

OVERHANG LIMIT (TYP.)

9
L287
966 SF
L289

8
L354
850 SF
L357

7
L288
974 SF
L284

6
L359
869 SF
L359

5
L278
961 SF
L282

4
L363
853 SF
L363

3
L275
959 SF
L270

2
L366
1,382 SF
L367

1
L270
1,573 SF
L273

12'

12'

105.5' R/W

10'

DOCK D

ACCESS-EG

37.5'



L479 1,715 SF 19.1'

21 50' TYP 833 SF

22 733 SF

19 836 SF

20 733 SF

17 869 SF

18 785 SF

15 875 SF

16 778 SF

13 864 SF

14 775 SF

11 859 SF

12 770 SF

9 865 SF

10 48' TYP 771 SF

7 865 SF

8 770 SF

5 875 SF

6 774 SF

3 866 SF

4 781 SF

1 1,423 SF

2 1,261 SF

40' R/W

N21°19'06"W 270.00'

5'

8'

OVERHANG LIMIT (TYP.)

OVERHANG LIMIT (TYP.)

62' R/W

N68°40'54"E 403.28'

DOCK E

EXHIBIT D

WILD DUNES YACHT HARBOR INC.

BKA 353PG-268

REGIME ASSESMENT PERCENTAGE

| DOCK # | FEET | % ALLOCATION | \$ ALLOCATION | DOCK # | FEET | % ALLOCATION | \$ ALLOCATION |
|-----------------------|-------------|----------------|-----------------|-------------------------|-------------|----------------|-------------------|
| A 1 | 35 | 0.737% | \$7.37 | D 1 | 50 | 1.053% | \$10.53 |
| A 2 | 35 | 0.737% | \$7.37 | D 2 | 45 | 0.948% | \$9.48 |
| A 3 | 35 | 0.737% | \$7.37 | D 3 | 50 | 1.053% | \$10.53 |
| A 4 | 35 | 0.737% | \$7.37 | D 4 | 45 | 0.948% | \$9.48 |
| A 5 | 35 | 0.737% | \$7.37 | D 5 | 50 | 1.053% | \$10.53 |
| A 6 | 35 | 0.737% | \$7.37 | D 6 | 45 | 0.948% | \$9.48 |
| A 7 | 35 | 0.737% | \$7.37 | D 7 | 50 | 1.053% | \$10.53 |
| A 8 | 35 | 0.737% | \$7.37 | D 8 | 45 | 0.948% | \$9.48 |
| A 9 | 35 | 0.737% | \$7.37 | D 9 | 50 | 1.053% | \$10.53 |
| A 10 | 35 | 0.737% | \$7.37 | D 10 | 45 | 0.948% | \$9.48 |
| A 11 | 38 | 0.801% | \$8.00 | D 11 | 50 | 1.053% | \$10.53 |
| A 12 | 38 | 0.801% | \$8.00 | D 12 | 45 | 0.948% | \$9.48 |
| TOTAL DOCK - A | 426 | 8.974% | \$89.70 | D 13 | 50 | 1.053% | \$10.53 |
| B 1 | 60 | 1.264% | \$12.64 | D 14 | 45 | 0.948% | \$9.48 |
| B 2 | 65 | 1.369% | \$13.69 | D 15 | 50 | 1.053% | \$10.53 |
| B 3 | 40 | 0.843% | \$8.42 | D 16 | 45 | 0.948% | \$9.48 |
| B 4 | 45 | 0.948% | \$9.48 | D 17 | 50 | 1.053% | \$10.53 |
| B 5 | 40 | 0.843% | \$8.42 | D 18 | 45 | 0.948% | \$9.48 |
| B 6 | 45 | 0.948% | \$9.48 | D 19 | 50 | 1.053% | \$10.53 |
| B 7 | 40 | 0.843% | \$8.42 | D 20 | 45 | 0.948% | \$9.48 |
| B 8 | 45 | 0.948% | \$9.48 | D 21 | 50 | 1.053% | \$10.53 |
| B 9 | 40 | 0.843% | \$8.42 | D 22 | 45 | 0.948% | \$9.48 |
| B 10 | 45 | 0.948% | \$9.48 | D 23 | 101 | 2.128% | \$21.28 |
| B 11 | 40 | 0.843% | \$8.42 | TOTAL DOCK - D | 1146 | 24.142% | \$241.39 |
| B 12 | 45 | 0.948% | \$9.48 | E 1 | 45 | 0.948% | \$9.48 |
| B 13 | 40 | 0.843% | \$8.42 | E 2 | 40 | 0.843% | \$8.43 |
| B 14 | 45 | 0.948% | \$9.48 | E 3 | 45 | 0.948% | \$9.48 |
| B 15 | 40 | 0.843% | \$8.42 | E 4 | 40 | 0.843% | \$8.43 |
| B 16 | 45 | 0.948% | \$9.49 | E 5 | 45 | 0.948% | \$9.48 |
| B 17 | 51 | 1.074% | \$10.74 | E 6 | 40 | 0.843% | \$8.43 |
| B 18 | 51 | 1.074% | \$10.74 | E 7 | 45 | 0.948% | \$9.48 |
| B 19 | 51 | 1.074% | \$10.74 | E 8 | 40 | 0.843% | \$8.43 |
| TOTAL DOCK - B | 873 | 18.391% | \$183.86 | E 9 | 45 | 0.948% | \$9.48 |
| C 1 | 50 | 1.053% | \$10.53 | E 10 | 40 | 0.843% | \$8.43 |
| C 2 | 50 | 1.053% | \$10.53 | E 11 | 45 | 0.948% | \$9.48 |
| C 3 | 50 | 1.053% | \$10.53 | E 12 | 40 | 0.843% | \$8.43 |
| C 4 | 50 | 1.053% | \$10.53 | E 13 | 45 | 0.948% | \$9.48 |
| C 5 | 50 | 1.053% | \$10.53 | E 14 | 40 | 0.843% | \$8.43 |
| C 6 | 50 | 1.053% | \$10.53 | E 15 | 45 | 0.948% | \$9.48 |
| C 7 | 50 | 1.053% | \$10.53 | E 16 | 40 | 0.843% | \$8.43 |
| C 8 | 50 | 1.053% | \$10.53 | E 17 | 45 | 0.948% | \$9.48 |
| C 9 | 50 | 1.053% | \$10.53 | E 18 | 40 | 0.843% | \$8.43 |
| C 10 | 50 | 1.053% | \$10.53 | E 19 | 45 | 0.948% | \$9.48 |
| C 11 | 50 | 1.053% | \$10.53 | E 20 | 40 | 0.843% | \$8.43 |
| C 12 | 50 | 1.053% | \$10.53 | E 21 | 45 | 0.948% | \$9.48 |
| C 13 | 50 | 1.053% | \$10.53 | E 22 | 40 | 0.843% | \$8.43 |
| C 14 | 50 | 1.053% | \$10.53 | E 23 | 100 | 1.917% | \$19.30 |
| C 15 | 50 | 1.053% | \$10.53 | TOTAL DOCK - E | 1026 | 21.614% | \$216.31 |
| C 16 | 50 | 1.053% | \$10.53 | Amenity Facilities | 35 | 0.737% | \$7.37 |
| C 17 | 50 | 1.053% | \$10.53 | Office Facilities | 35 | 0.737% | \$7.37 |
| C 18 | 50 | 1.053% | \$10.53 | TOTAL FACILITIES | 70 | 1.475% | \$14.74 |
| C 19 | 50 | 1.053% | \$10.53 | GRAND TOTAL | 4747 | 100.00% | \$1,000.00 |
| C 20 | 50 | 1.053% | \$10.53 | | | | |
| C 21 | 50 | 1.053% | \$10.53 | | | | |
| C 22 | 60 | 1.053% | \$10.53 | | | | |
| C 23 | 106 | 2.233% | \$22.34 | | | | |
| TOTAL DOCK - C | 1206 | 25.406% | \$254.00 | | | | |

Actual total 1000

EXHIBIT D

BKA 353PG268

WILD DUNES YACHT HARBOR INC.

REGIME ASSESMENT PERCENTAGE

| DOCK # | FEET | % ALLOCATION | \$ ALLOCATION | DOCK # | FEET | % ALLOCATION | \$ ALLOCATION |
|-----------------------|-------------|----------------|-----------------|-------------------------|-------------|----------------|-------------------|
| A 1 | 35 | 0.737% | \$7.37 | D 1 | 50 | 1.053% | \$10.53 |
| A 2 | 35 | 0.737% | \$7.37 | D 2 | 45 | 0.948% | \$9.48 |
| A 3 | 35 | 0.737% | \$7.37 | D 3 | 50 | 1.053% | \$10.53 |
| A 4 | 35 | 0.737% | \$7.37 | D 4 | 45 | 0.948% | \$9.48 |
| A 5 | 35 | 0.737% | \$7.37 | D 5 | 50 | 1.053% | \$10.53 |
| A 6 | 35 | 0.737% | \$7.37 | D 6 | 45 | 0.948% | \$9.48 |
| A 7 | 35 | 0.737% | \$7.37 | D 7 | 50 | 1.053% | \$10.53 |
| A 8 | 35 | 0.737% | \$7.37 | D 8 | 45 | 0.948% | \$9.48 |
| A 9 | 35 | 0.737% | \$7.37 | D 9 | 50 | 1.053% | \$10.53 |
| A 10 | 35 | 0.737% | \$7.37 | D 10 | 45 | 0.948% | \$9.48 |
| A 11 | 38 | 0.801% | \$8.00 | D 11 | 50 | 1.053% | \$10.53 |
| A 12 | 38 | 0.801% | \$8.00 | D 12 | 45 | 0.948% | \$9.48 |
| TOTAL DOCK - A | 426 | 8.974% | \$89.70 | D 13 | 50 | 1.053% | \$10.53 |
| B 1 | 60 | 1.264% | \$12.64 | D 14 | 45 | 0.948% | \$9.48 |
| B 2 | 65 | 1.369% | \$13.69 | D 15 | 50 | 1.053% | \$10.53 |
| B 3 | 40 | 0.843% | \$8.42 | D 16 | 45 | 0.948% | \$9.48 |
| B 4 | 45 | 0.948% | \$9.48 | D 17 | 50 | 1.053% | \$10.53 |
| B 5 | 40 | 0.843% | \$8.42 | D 18 | 45 | 0.948% | \$9.48 |
| B 6 | 45 | 0.948% | \$9.48 | D 19 | 50 | 1.053% | \$10.53 |
| B 7 | 40 | 0.843% | \$8.42 | D 20 | 45 | 0.948% | \$9.48 |
| B 8 | 45 | 0.948% | \$9.48 | D 21 | 50 | 1.053% | \$10.53 |
| B 9 | 40 | 0.843% | \$8.42 | D 22 | 45 | 0.948% | \$9.48 |
| B 10 | 45 | 0.948% | \$9.48 | D 23 | 101 | 2.128% | \$21.28 |
| B 11 | 40 | 0.843% | \$8.42 | TOTAL DOCK - D | 1146 | 24.142% | \$241.39 |
| B 12 | 45 | 0.948% | \$9.48 | E 1 | 45 | 0.948% | \$9.48 |
| B 13 | 40 | 0.843% | \$8.42 | E 2 | 40 | 0.843% | \$8.43 |
| B 14 | 45 | 0.948% | \$9.48 | E 3 | 45 | 0.948% | \$9.48 |
| B 15 | 40 | 0.843% | \$8.42 | E 4 | 40 | 0.843% | \$8.43 |
| B 16 | 45 | 0.948% | \$9.48 | E 5 | 45 | 0.948% | \$9.48 |
| B 17 | 51 | 1.074% | \$10.74 | E 6 | 40 | 0.843% | \$8.43 |
| B 18 | 51 | 1.074% | \$10.74 | E 7 | 45 | 0.948% | \$9.48 |
| B 19 | 51 | 1.074% | \$10.74 | E 8 | 40 | 0.843% | \$8.43 |
| TOTAL DOCK - B | 873 | 18.391% | \$183.86 | E 9 | 45 | 0.948% | \$9.48 |
| C 1 | 50 | 1.053% | \$10.53 | E 10 | 40 | 0.843% | \$8.43 |
| C 2 | 50 | 1.053% | \$10.53 | E 11 | 45 | 0.948% | \$9.48 |
| C 3 | 50 | 1.053% | \$10.53 | E 12 | 40 | 0.843% | \$8.43 |
| C 4 | 50 | 1.053% | \$10.53 | E 13 | 45 | 0.948% | \$9.48 |
| C 5 | 50 | 1.053% | \$10.53 | E 14 | 40 | 0.843% | \$8.43 |
| C 6 | 50 | 1.053% | \$10.53 | E 15 | 45 | 0.948% | \$9.48 |
| C 7 | 50 | 1.053% | \$10.53 | E 16 | 40 | 0.843% | \$8.43 |
| C 8 | 50 | 1.053% | \$10.53 | E 17 | 45 | 0.948% | \$9.48 |
| C 9 | 50 | 1.053% | \$10.53 | E 18 | 40 | 0.843% | \$8.43 |
| C 10 | 50 | 1.053% | \$10.53 | E 19 | 45 | 0.948% | \$9.48 |
| C 11 | 50 | 1.053% | \$10.53 | E 20 | 40 | 0.843% | \$8.43 |
| C 12 | 50 | 1.053% | \$10.53 | E 21 | 45 | 0.948% | \$9.48 |
| C 13 | 50 | 1.053% | \$10.53 | E 22 | 40 | 0.843% | \$8.43 |
| C 14 | 50 | 1.053% | \$10.53 | E 23 | 91 | 1.917% | \$19.30 |
| C 15 | 50 | 1.053% | \$10.53 | TOTAL DOCK - E | 1026 | 21.614% | \$216.31 |
| C 16 | 50 | 1.053% | \$10.53 | Amenity Facilities | 35 | 0.737% | \$7.37 |
| C 17 | 50 | 1.053% | \$10.53 | Office Facilities | 35 | 0.737% | \$7.37 |
| C 18 | 50 | 1.053% | \$10.53 | TOTAL FACILITIES | 70 | 1.475% | \$14.74 |
| C 19 | 50 | 1.053% | \$10.53 | GRAND TOTAL | 4747 | 100.00% | \$1,000.00 |
| C 20 | 50 | 1.053% | \$10.53 | | | | |
| C 21 | 50 | 1.053% | \$10.53 | | | | |
| C 22 | 50 | 1.053% | \$10.53 | | | | |
| C 23 | 106 | 2.233% | \$22.34 | | | | |
| TOTAL DOCK - C | 1206 | 25.406% | \$254.00 | | | | |

Actual total 1000