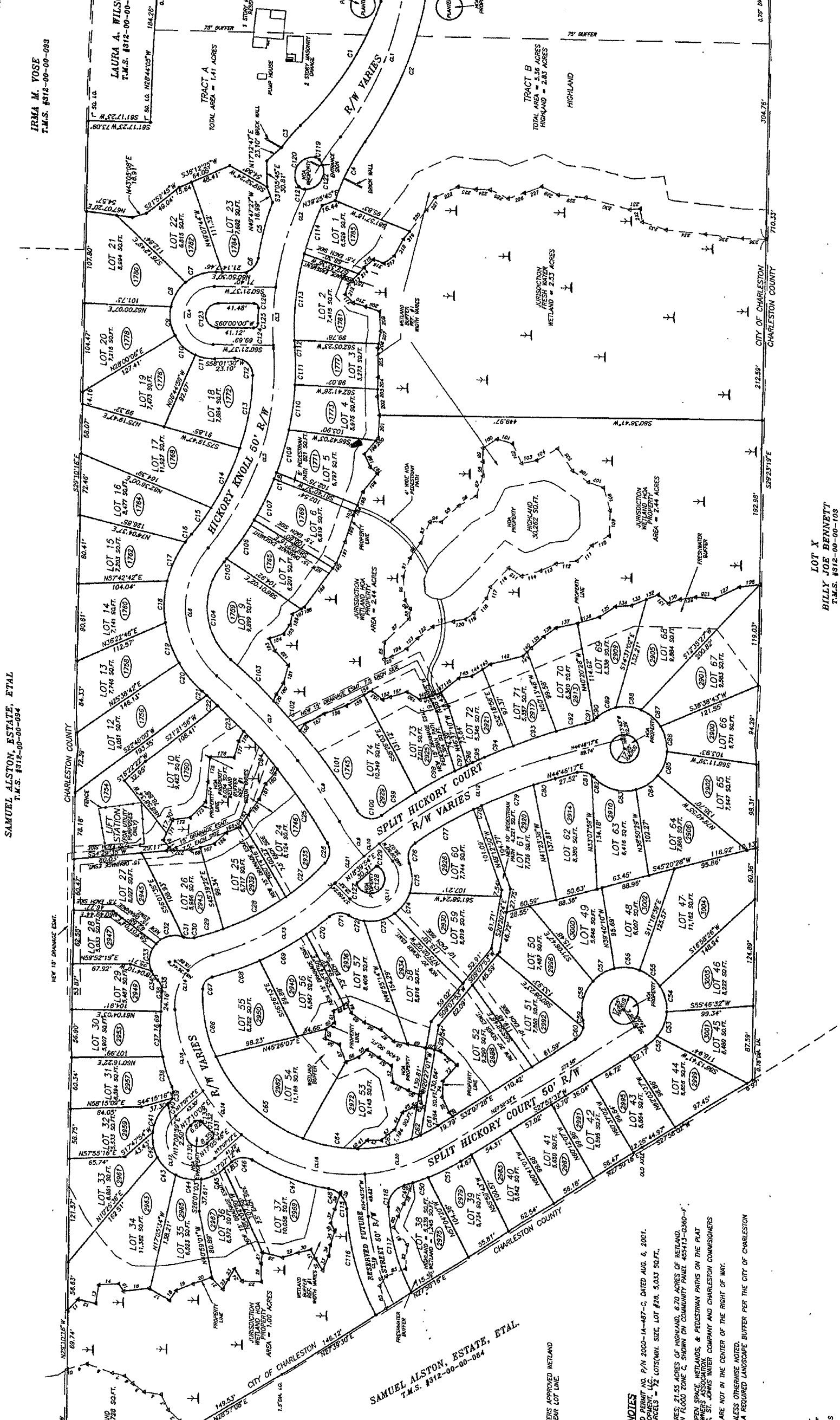


SAMUEL ALSTON, ESTATE, ETAL
T.M.S. #312-00-054

IRMA M. YOSE
T.M.S. #312-00-088

LAURA A. WILSON
T.M.S. #312-00-080

LOT X
BILLY JOE BENNETT
T.M.S. #312-00-103



NOTES
 PROVIDED PERMIT NO. P/N 2000-1A-487-C, DATED AUG. 6, 2001.
 DEVELOPMENT, LLC.
 LOT PARCELS = 72 LOTS (MIN. SIZE, LOT #28, 5,033 SQ. FT.).

22 ACRES, 21.55 ACRES OF HIGHLAND, 6.70 ACRES OF WETLAND,
 SITED IN FLOOD ZONE C, SHOWN ON COMMUNITY PANEL 455413-0-80-F.
 THE OPEN SPACE, WETLANDS, & PEDESTRIAN PATHS ON THE PLAT
 ARE THE PROPERTY OF THE DEVELOPER, SAMUEL ALSTON, ESTATE,
 ETAL, ST. JOHNS WATER COMPANY AND CHARLESTON COMMISSIONERS
 ARE NOT IN THE CENTER OF THE RIGHT OF WAY.
 1.0, UNLESS OTHERWISE NOTED.
 ANY IS A REQUIRED LANDSCAPE BUFFER PER THE CITY OF CHARLESTON

SAMUEL ALSTON, ESTATE, ETAL.
 T.M.S. #312-00-054

ENGINEERS APPROVED WETLAND
 & REAR LOT LINE.

LEDOE
 RECON
 USE OF
 102' OF
 OR
 100' AS