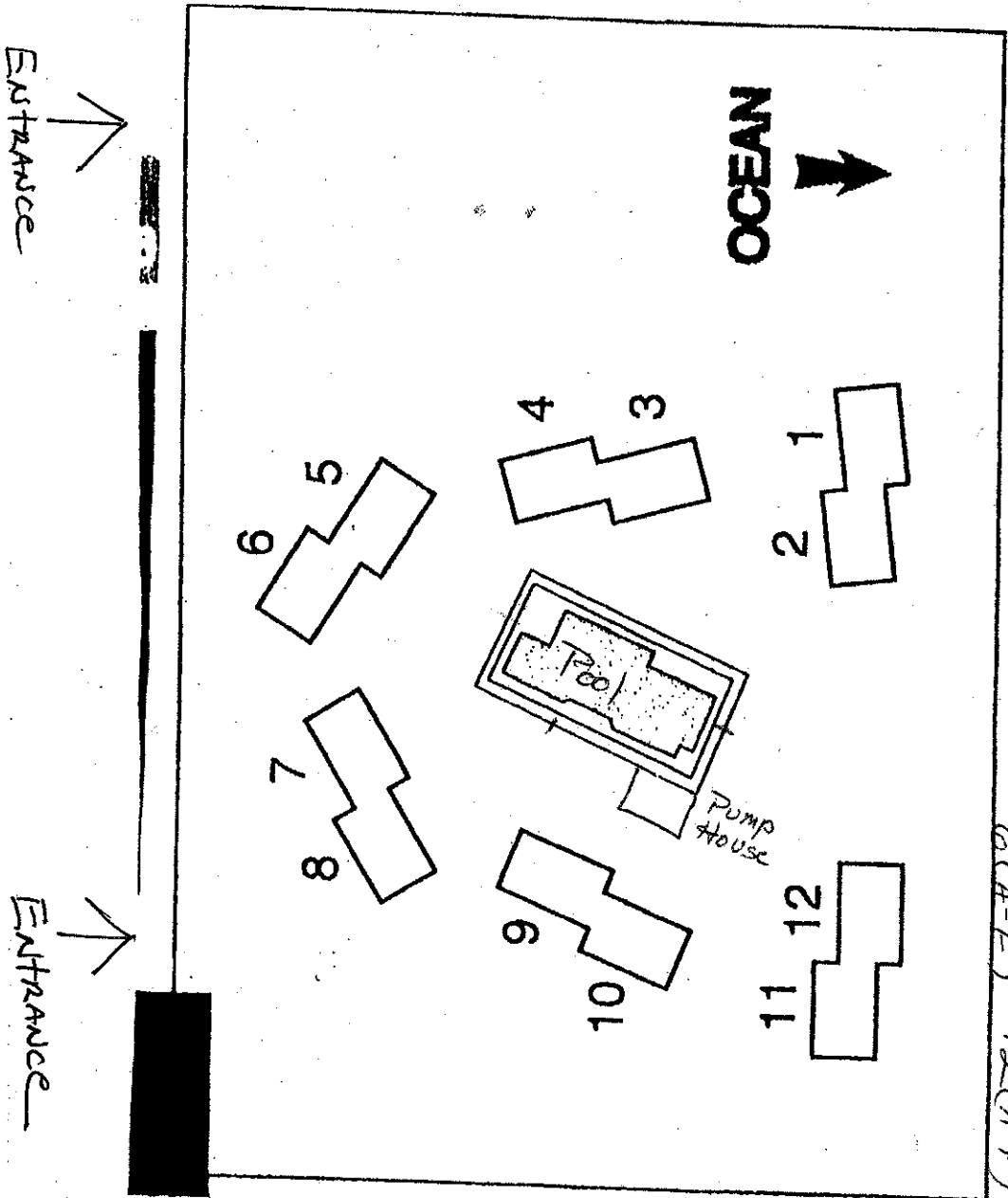


Warriner's Walk

A-F units

- 1 (A-F)
- 2 (A-F)
- 3 (A-F)
- 4 (A-F)
- 5 (A-F)
- 6 (A-F)
- 7 (A-F)
- 8 (A-F)
- 9 (A-F)
- 10 (A-F)
- 11 (A-F)
- 12 (A-F)

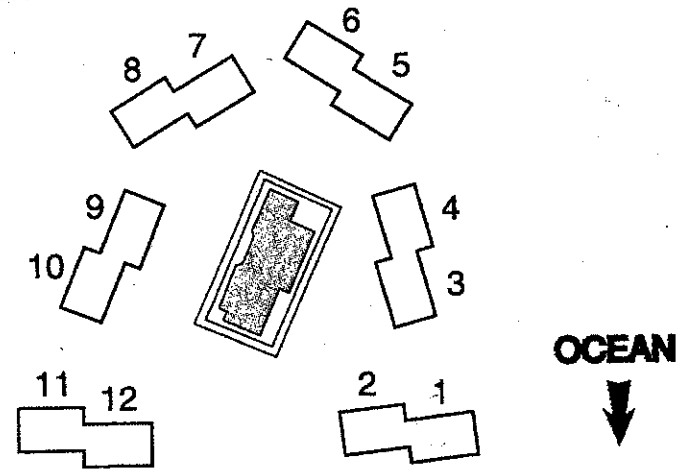


## **D** Mariner's Walk Villas



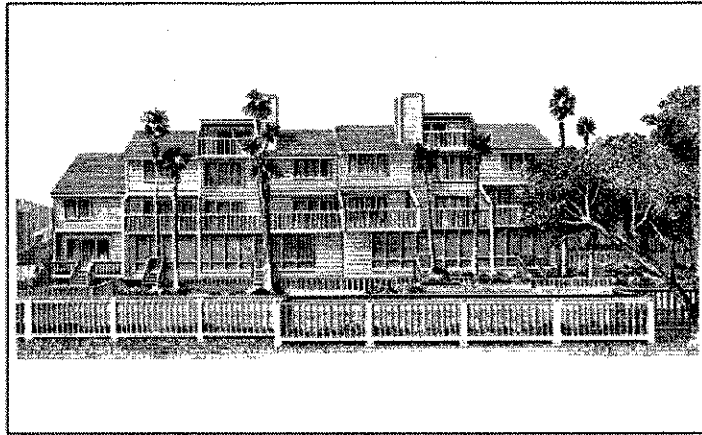
Isle of Palms/Wild Dunes

Whether you're coming for beach, or golf, you'll love Mariner's Walk Condominiums! Ideally situated between both, each condominium features 1 to 3 bedrooms facing either the beach or the pool with an ocean view. The master bedrooms include the convenience of a private bath. Each villa features a private screened porch or sundeck, washer, dryer, and dishwasher. Mariner's Walk puts you in the middle of where you want to be!



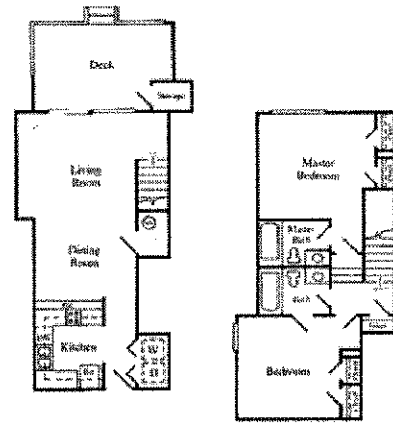
# Mariners Walk Villas

# Wild Dunes



### Standard Features:

- One, two, and three bedroom luxury villas
- Design and site planning provides ocean view from each villa
- Oceanfront pool and large deck
- Exterior of rustic cypress and cedar
- One covered parking space per villa
- Double stud common walls with fiberglass insulation and sound deadening board
- Fiberglass insulation and lightweight concrete floors between villas
- Solid core doors
- Double-pane insulating glass throughout
- Condominium form of ownership with Owner's Association providing for common element maintenance

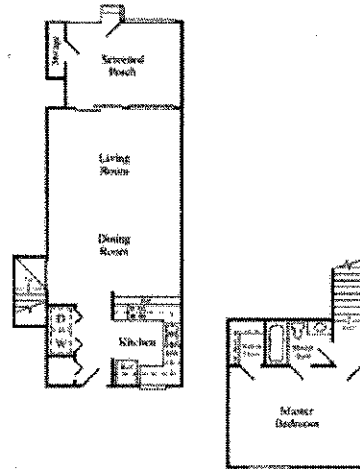


2 Bedroom/2 Bath  
Townhouse Type

1st Floor

2nd Floor

A



1 Bedroom/1 Bath  
Townhouse Type

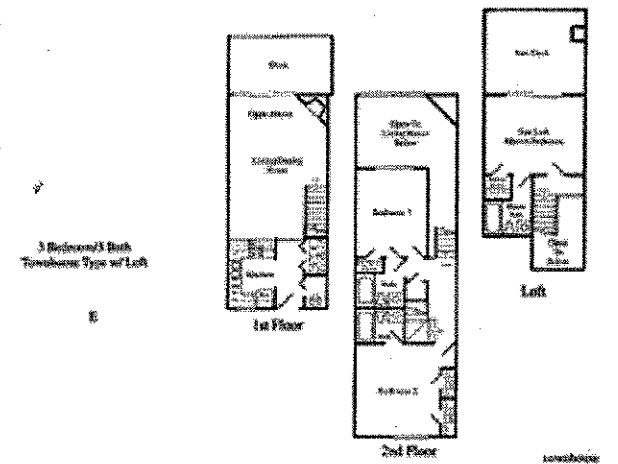
1st Floor

2nd Floor

B

# Mariners Walk Villas

# Wild Dunes

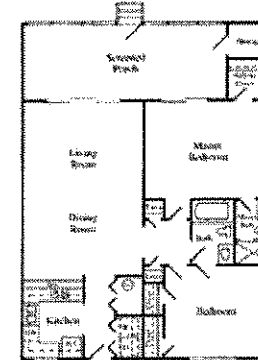


3 Bedroom/3 Bath  
Townhouse Type w/Loft

E

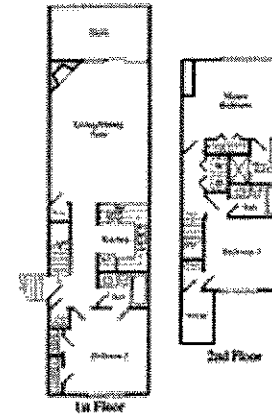


1st Floor



2 Bedroom/2 Bath  
Flat

C



1st Floor



2nd Floor

3 Bedroom/2 Bath  
Townhouse Type

1st Floor

2nd Floor

D